



Ridge Creek Fire

Idaho Panhandle National Forests, Coeur d'Alene River
Ranger District

Fire Information 208-953-7022

Media Information 989-292-9373

2023.ridgecreek@firenet.gov

<https://inciweb.nwcg.gov/incident-information/idipf-ridge-creek>



August 11, 2023

Location: Approximately 3.5 miles east of the north tip of Hayden Lake, along the Hayden Creek Road (FSR 437) in the Ridge Creek drainage

Start Date: 8/3/2023 **Cause:** Human/Under Investigation **Size:** 2,402 acres **Containment:** 5%

Total Personnel: 338 **Engines:** 6 **Heavy Equipment:** 6 **Crews:** 4

A helicopter flight yesterday was used to map the perimeter of the fire. Information gathered was used to construct an updated map, included with this update, and a more accurate estimate of fire acreage.

The acreage increase is primarily because of updated mapping rather than recent fire growth.

FIRE STATUS

The Ridge Creek Fire is now estimated at 2,402 acres with 5% containment. Fire crews and heavy equipment operators have made substantial progress in building, reinforcing, and connecting containment lines. Containment reflects how much of the fire's perimeter has reached the fireline and is reasonably expected to hold there. The forecasted hot, dry, windy weather will be a test of the good work that has been done on the ground by firefighters and heavy equipment operators.

Hand crews and dozers continue to work on the south end of the fire along Forest Service Rd 437 (Hayden Creek Rd), east through Hells Canyon to FSR 406 and up to Hudlow Saddle. On the fire's northeast side, crews continue to improve fireline through Sage Creek Saddle using FSR 406. On the fire's west flank, crews are reinforcing FSR 625 (North Fork Rd). From the intersection of FSR 625 and FSR 1526, crews are constructing fireline along a forested ridge to FSR 406 near Cedar Saddle. Additional containment line is also being constructed using FSR 2302 (Buckles Mountain Rd) and along Ridge Creek to FSR 437 (Hayden Creek Rd).

WEATHER AND FIRE BEHAVIOR

The weather will trend to warmer and drier in the coming week, which will cause fire behavior to increase. Temperatures today will range from the mid-80s at lower elevations to the mid-70s at higher elevations. Winds will be predominantly out of the southwest, gusting to 30 mph. Relative humidity will be in the range of 25-30%. Fire activity is anticipated to increase, particularly on south facing slopes. Smoke is likely to be visible.

EVACUATION STATUS

The Kootenai County Office of Emergency Management has issued an alert to inform residents of the identification of **READY, SET, GO** areas in the vicinity of the Bunco Road and Hayden Lake. In this status, residents are cautioned to heighten their awareness of fire information, be familiar with evacuation procedures should it become necessary, and consistently adhere to good fire prevention measures.

The Kootenai Office of Emergency Management provides the following direction for residents in these areas designated with a **GET READY** status: "Please continue to monitor official sources and call 208-446-2292 for any questions regarding evacuations. Follow Kootenai County Emergency Management Facebook Page for updates and sign up for automated Kootenai Alert for emergency alerts. <https://www.kcsheriff.com/186/Emergency-Management>."

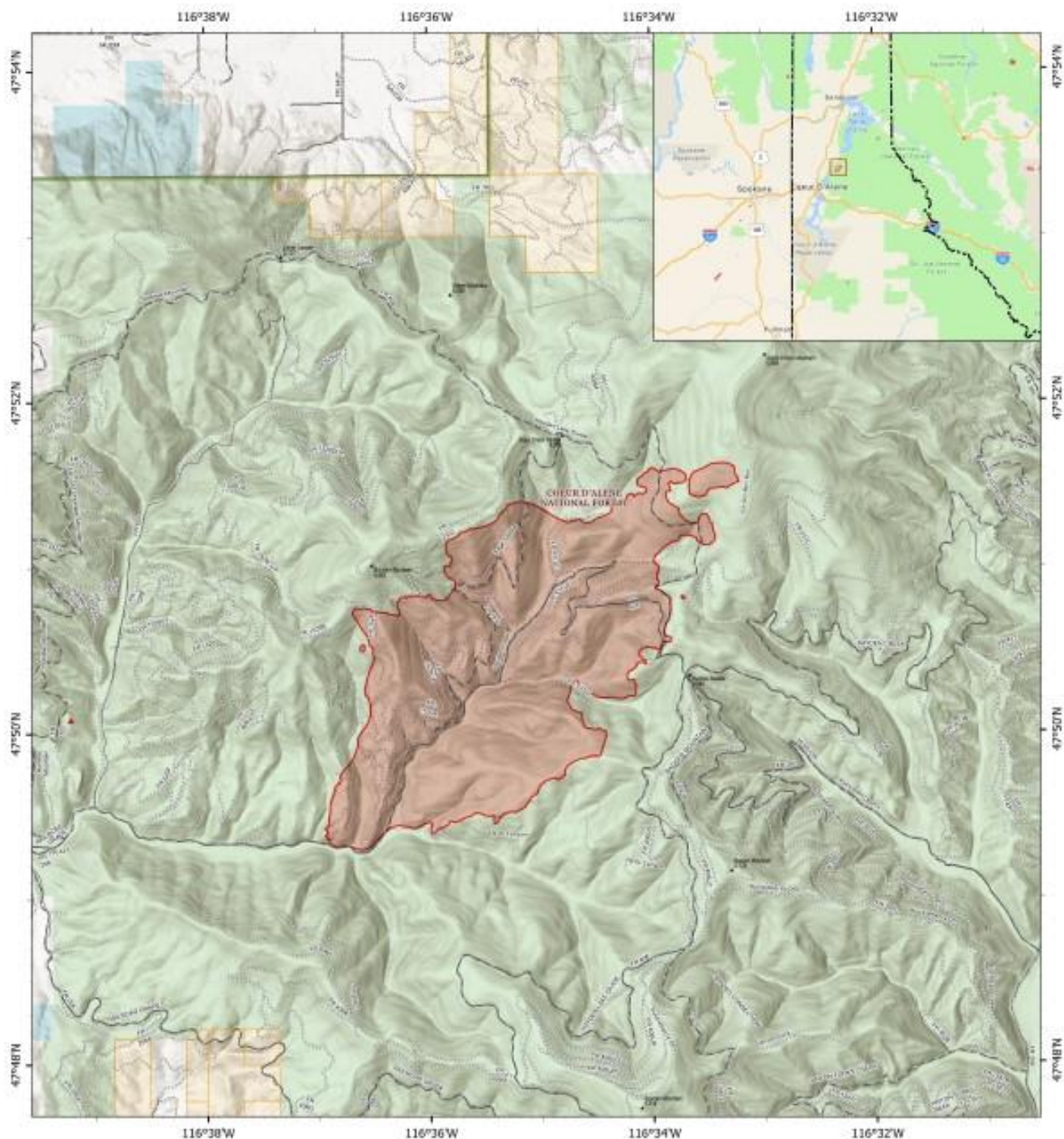
A map of the revised **GET READY** areas is included with this update below.

CLOSURES AND SPECIAL MESSAGES

Firefighting aircraft are shared resources among numerous fires within the region, including the Ridge Creek Fire. These aircraft will continue to use area waterways, including Hayden Lake, for fire suppression efforts. This means that residents and recreational boaters are likely to see either helicopters or fixed-wing aircraft using the lake. For planes in particular, this requires a long, linear approach and exit from the lake. This restricts their ability to maneuver abruptly should watercraft be within their flight path, creating a serious safety hazard for both boaters and pilots. Pilots that have to deviate to avoid watercraft will also be delayed in acquiring water, inhibiting their fire suppression efforts. **All lake users should be on the lookout for approaching aircraft.** If firefighting aircraft are in the area, boaters should clear the center of the lake and move toward the shoreline.

The Coeur d'Alene Dispatch Zone has issued Stage II Fire Restrictions across the Idaho panhandle. The entirety of Kootenai County is within the Stage II Fire Restrictions area. An infographic is included with this update that details the activities that are prohibited under the restriction.

The Idaho Panhandle National Forests issued an emergency closure (Closure Order #01-04-03-23-002) effective August 4, 2023. This Order is for public and firefighter safety due to heavy fire traffic on the area impacted on the Coeur d'Alene River Ranger District, and prohibits all methods of travel (foot, mechanized, motorized and stock) on Forest Service Roads 392, 428A, 437, 1511, 1530, 1552, 1587 and Forest Service Roads 206 and 406 north of their junction, Forest Service Trails 69, 78, 234, and 802 as well as within the described area.



Ridge Creek Fire Vicinity Map

RIDGE CREEK
IDIPF000447

8/11/2023 Day

2,402 acres at 8/10/2023 @ 1330 hrs
Acres from iR

North American 1983 Datum
Lambert Conformal



0 0.5 1 Miles

US State Boundaries

Wildfire Daily Fire Perimeter

Land Management

State

US Forest Service (USFS)

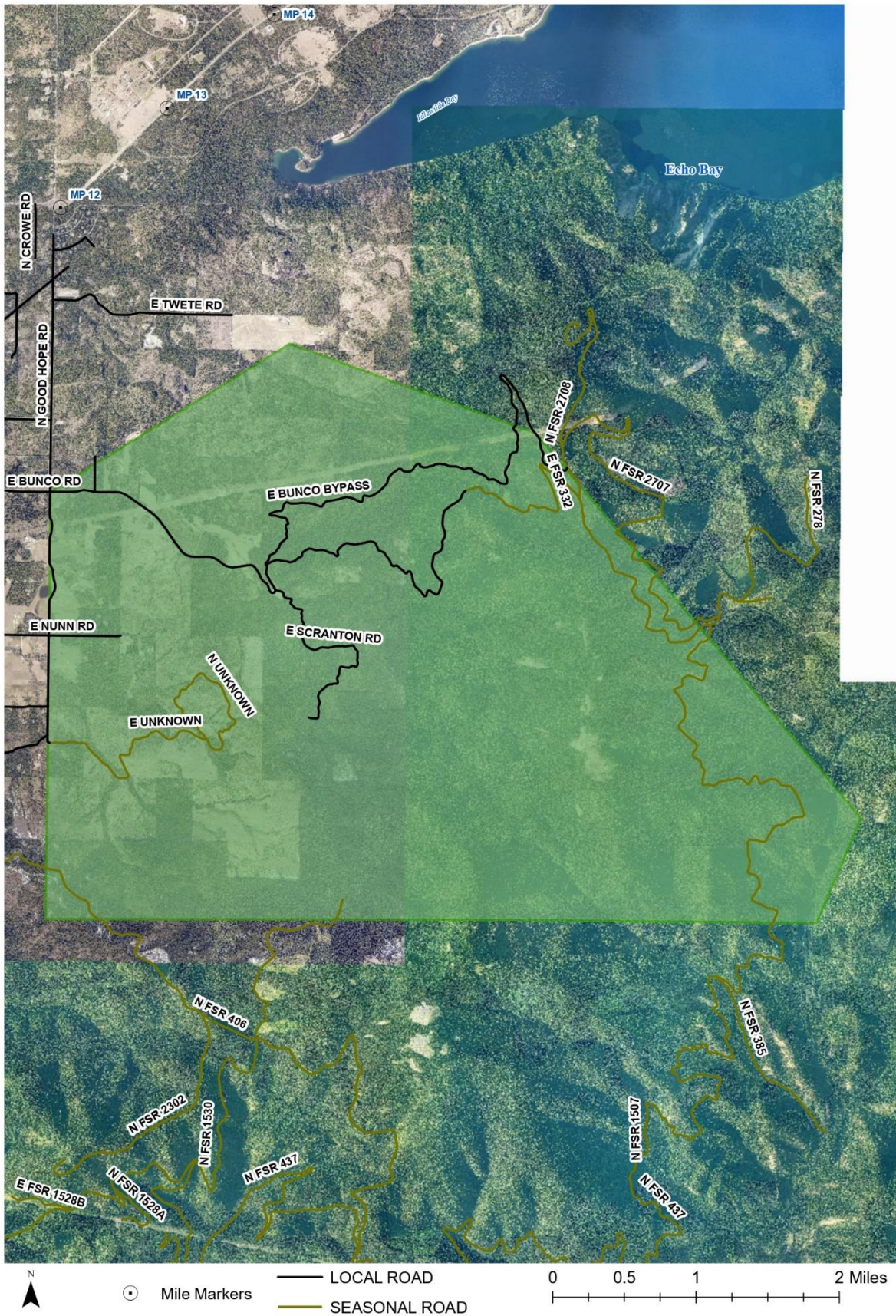




Ridge Creek Fire - Bunco

Kootenai County
August 8th, 2023

Level 1: Get Ready

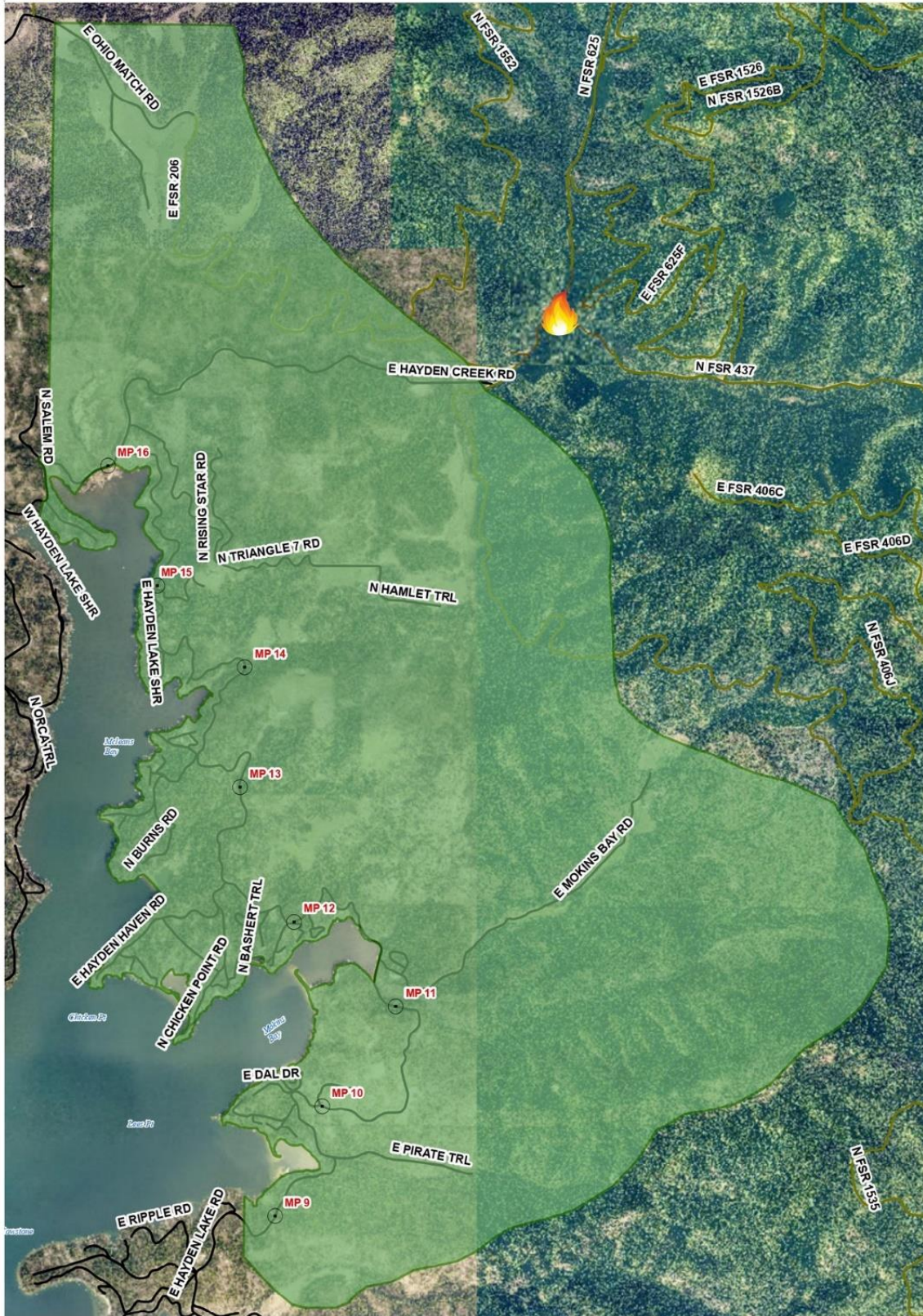




Ridge Creek Fire

Level 1: Get Ready

Kootenai County
August 4th, 2023



○ Mile Markers
— LOCAL ROAD
— SEASONAL ROAD

0 0.25 0.5 1 Miles



Idaho Panhandle National Forests



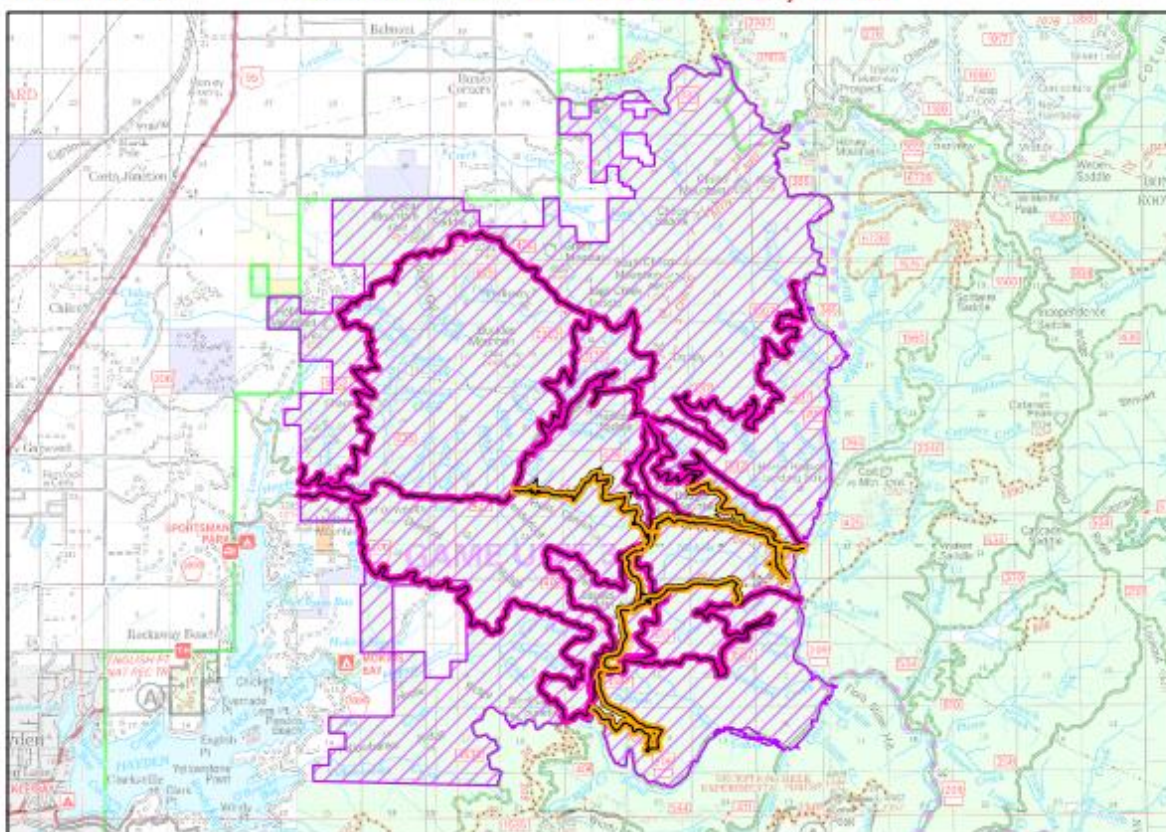
Forest Closure: Ridge Creek Fire Closure

Order Number: 01-04-03-23-002

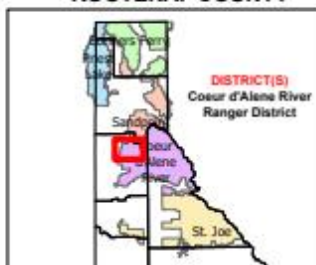
Effective Date : AUGUST 4th, 2023

Rescind Date : SEPTEMBER 30th, 2023

Exhibit A



IDAHO KOOTENAI COUNTY



Closed Road Numbers:

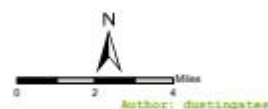
-206
-392
-406
-428A
-437
-1511
-1530
-1552
-1587

Closed Trail Numbers:

-69
-78
-234
-802

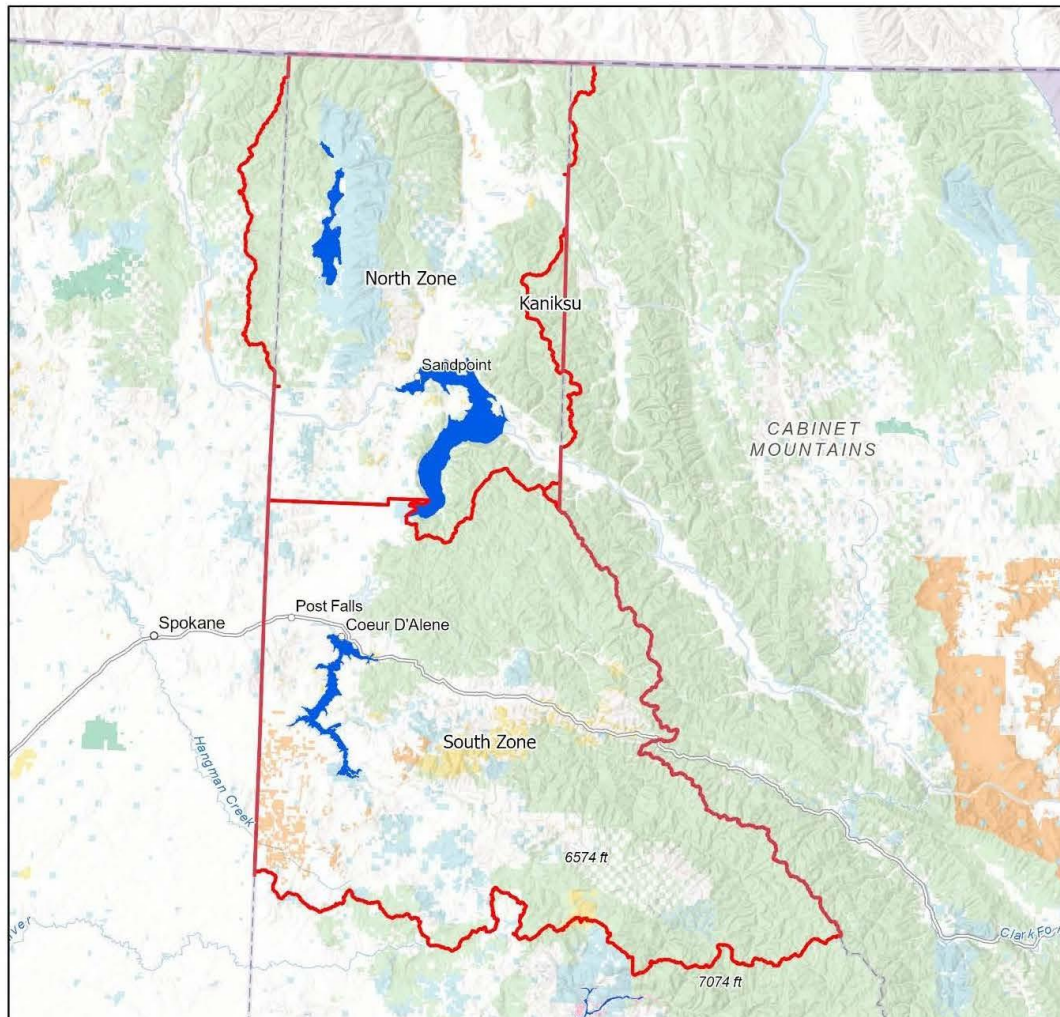
Closures

- Road
- Trail
- Area



Coeur d'Alene

Fire Restriction Areas



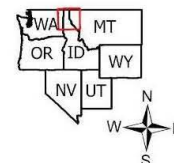
Date Created:
05/18/2022

The surface management status should be used as a general guide only. Official lands records at the Bureau of Land Management (BLM) and other State and County offices should be checked for up-to-date information regarding any specific tract of lands.

No warranty is made by the Idaho Department of Lands (IDL) as to the accuracy, reliability, or completeness of these datasets for individual use or aggregation with other datasets.

Spatial Reference
Name: WGS 1984 Web Mercator Auxiliary Sphere

0 5 10 20 30 40 Miles



FIRE RESTRICTIONS



STAGE II RESTRICTIONS are in effect and **prohibit** the following:



FIRES OR CHARCOAL

Prohibited: Building, maintaining, attending or using a fire, campfire, or stove fire.

Exceptions: Persons using a fire or stove fire fueled solely by liquid petroleum or LPG fuels. Such devices, including propane campfires, may be used only in an area **clear of flammable material**.



SMOKING

Prohibited: Smoking outside an enclosed vehicle or building. **Exceptions:** You can smoke while stopped in an area at least 3 feet in diameter

that is barren or **cleared of all flammable materials**.



Cross Country Travel

Prohibited: Operating motorized vehicles off designated roads and trails.



Chainsaws/Other Equipment

Prohibited: The following acts are prohibited from 1:00 p.m. to 1:00 a.m. - Operating a chainsaw or other equipment powered by an internal combustion engine; blasting, welding, or other activities that generate flame or flammable material; or using an explosive.

Remember – Fireworks are illegal on federal public lands.



For more information contact your local fire agency